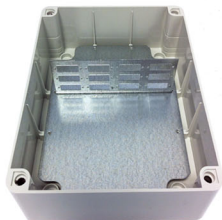
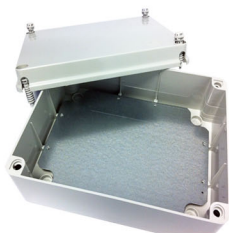


IP56 Rated Boxes FC/ST, SC Duplex/LC Quad



Our range of IP rated wall boxes are constructed to comply with the IP56 level of the Ingress Protection Rating Scheme.

The boxes can either be supplied as unloaded (no adapters) or supplied with the adapters of your choice and/or a simple splice management kit. Maximum adapter capacity is up to 24 x FC/ST, 12 x SC Duplex or 12 x LC Quad adapters.

TECHNICAL SPECIFICATION

| | |
|----------------------------------|---------------|
| Width | 200 mm |
| Depth | 110 mm |
| Height | 260 mm |
| Color | Grey RAL 7035 |
| Cable entry 2 x 20mm gland holes | |

