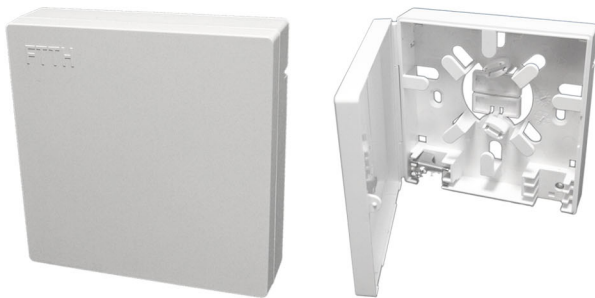


Customer Connection Terminal Box



OPTiFab's fibre termination box is constructed from a lightweight, strong ABS housing. It features a compact design with a hinge cover for ease of access during installation.

FEATURES

- Attractive compact hinge design
- Suitable for indoor wall or floor mount
- Optical fibre can be managed effectively
- Splice tray can be removed when required during installation or operation
- Adaptors: SC and FC
- Adaptor slots
- Temperature use: -40 to +75 deg C
- Dimensions: 86mm x 86mm x 27mm
- Easy installation