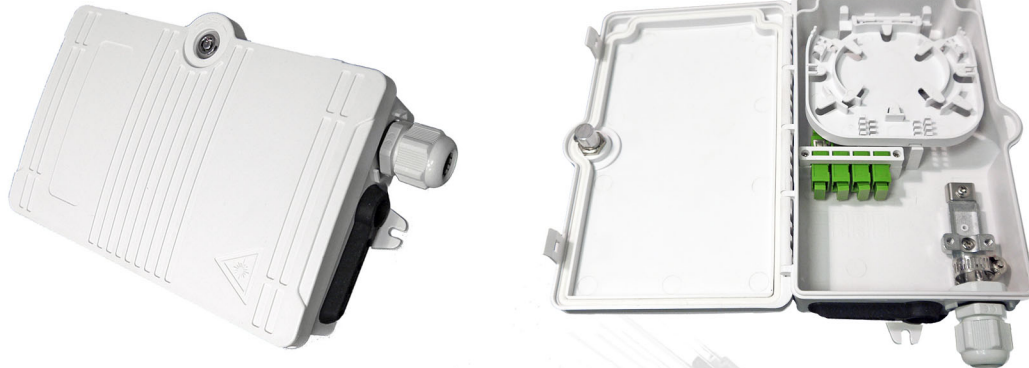


## 4-Way Lock & Latch Wall Box (IP65-rated)



The 4-way lock and latch wall box is used for the distribution & termination of fibre optic cable devices. The IP65-rated wall box can be utilised for FTTH applications & other installation requirements to break out and splice input cables into drop cables, pigtails or direct patching. The box may also be used for protective interconnection of a fibre network and is suitable for outdoor, riser and tunnel installations.

### FEATURES:

- The box is made of anti-aging materials with ultraviolet protective characteristics.
- The sealing mechanism is based on pressed rubber/silicon strip and is rated to IP65.
- The box is fitted with a lock for additional security and can be installed on walls or mounted on a pole.
- Operating Temperature:  $-20^{\circ}\text{C}\sim+70^{\circ}\text{C}$ ; storage:  $-40^{\circ}\text{C}\sim+80^{\circ}\text{C}$ .
- Spare loops of pigtails and drop cables can be stowed in the storage compartment for convenience and maintenance.
- Special locking device for output cables.