

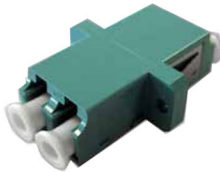
## LC Connector/Adapter



Duplex Multimode Connector



Simplex Singlemode and APC



Duplex Multimode Aqua Adapter

*The OPTiFab LC (Lucent Connector) is a small form-factor connector, characterised by its small size, 1.25mm ferrule and insertion clip. Its 1.25mm ferrule is half the size of the ST connector and is often used in singlemode applications due to its fantastic performance.*

### FEATURES

- PC, UPC and APC polishing options
- Simplex and Duplex configuration
- Easy and safe insertion and removal
- Robust construction
- Excellent choice for singlemode applications
- Colours available: beige, blue and green
- 900µm, 2mm and 3mm diameter boot

### CONNECTOR SPECIFICATIONS

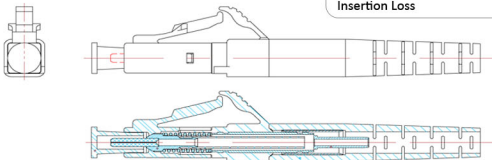
Temp. Cycling	-40 to +75°C, 40 cycles; ±0.2dB Change
High Temp.	70°C for 96 hours; < 0.4dB Change
Damp Heat	40°C at 93% RH, 96 hours; < 0.4dB Change
Vibration	10-55 Hz, 1.5mm P to P; < 0.2dB Change
Mating Durability	500 mating cycles; < 0.2dB Change
Operating Temp.	-40°C to +85°C

### CONNECTOR PERFORMANCE - SINGLEMODE

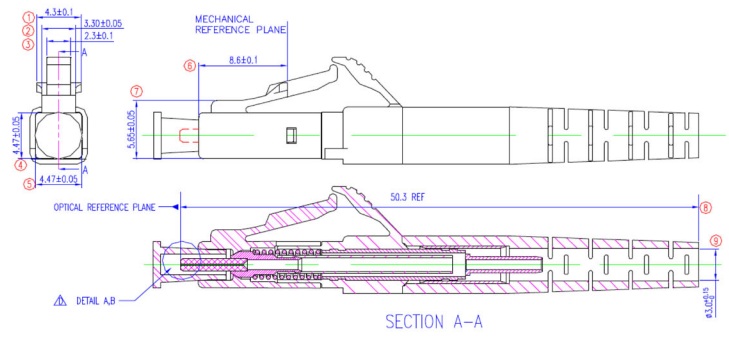
Insertion Loss	Max. 0.3dB, Typical 0.2dB
Return Loss	UPC > 50dB Typical 55dB APC > 60dB Typical 65dB

### CONNECTOR PERFORMANCE - MULTIMODE

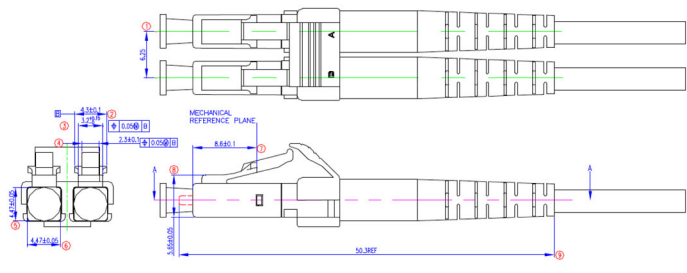
Insertion Loss	Max. 0.5dB, Typical 0.3dB
----------------	---------------------------



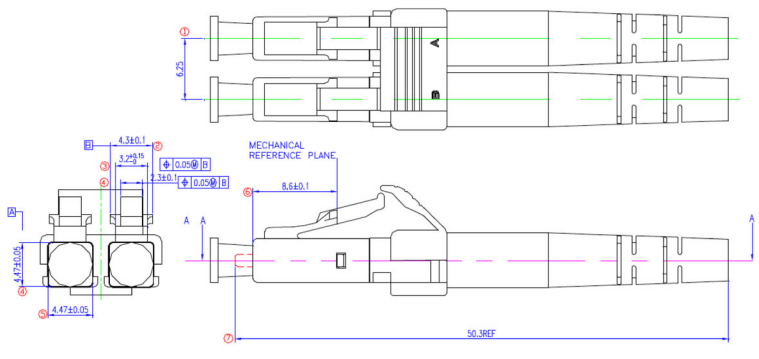
### LC Connector SM and MM 3.0mm boot style



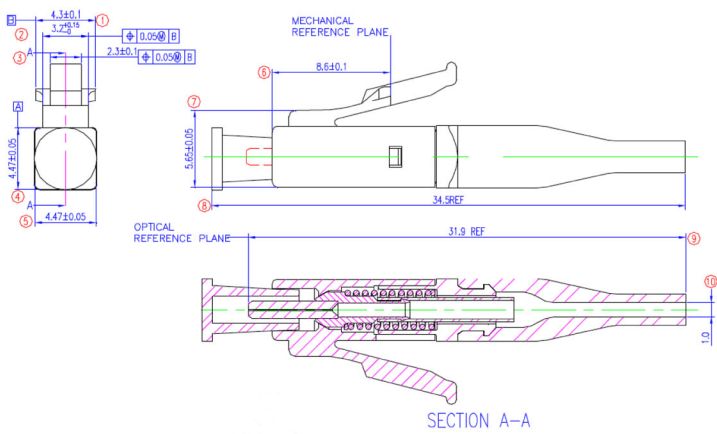
### LC Connector SM and MM 2.0mm boot duplex style



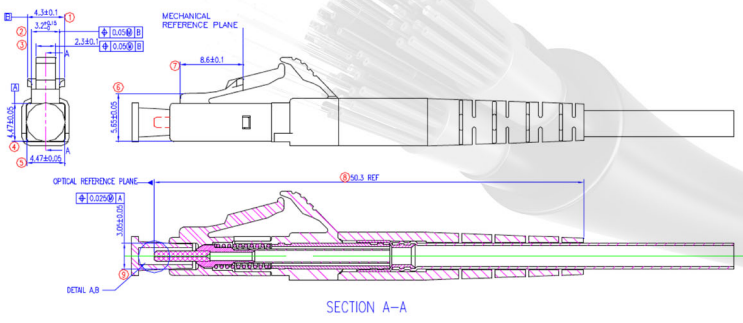
### LC Connector SM and MM 3.0mm boot duplex style



### LC Connector SM and MM 0.9mm boot style



### LC Connector SM and MM 2.0mm boot style



## Ordering Information

MODE	
OM1	OM1
OM2	OM2
OM3	OM3
OM4	OM4
OS2	OS2
G657A1	7A
G657A2	7A2

CONSTRUCTION TYPE	
LOOSE TUBE	LT
TIGHT BUFFERED	TB
STEEL TAPE ARMoured	STA
BREAKOUT	BO
STEEL WIRE ARMOUR	SWA

NO. OF FIBRES	
1 Fibre	1
2 Fibre	2
4 Fibre	4
8 Fibre	8
12 Fibre	12
16 Fibre	16
24 Fibre	24
48 Fibre	48
96 Fibre	96
144 Fibre	144
288 Fibre	288

JACKET	
Low Smoke Zero Hallogen	LS
Poly Ethylene	PE

### Sample Part Number

OM1

TB

24

LS

**OM1TB24-LS**

**OM1 Loose Tube Cable 24 Fibres Low Smoke Hallogen**

ESTIMATED CABLE WEIGHTS CHART KG/KM							
FIBRE COUNTS	TB	LT	STA	SWA	FLAT	DUPLEx	SIMPLEx
2	19	53	88	180	27	9	7.5
4	22	53	88	180	X	X	X
6	29	53	88	180	X	X	X
8	37	53	88	180	X	X	X
12	49	53	88	180	X	X	X
24	57	60	88	180	X	X	X