

## Optical Fibre Distribution System



### OVERVIEW

OPTiLite optical fiber distribution frame FDS09S is made of top quality steel and deformed aluminum alloy and treated with galvanizing, oxidation and electrostatic plastic spraying. The frame has solid structure and pleasing appearance.

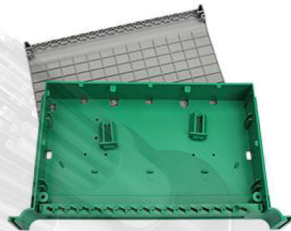
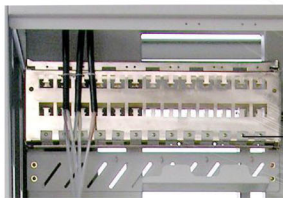
### DIMENSIONS AND CAPABILITY

Dimensions (W*H*D)	Quantity of line module tray	Quantity of row module tray	Full capacity
2000*880*300	54	54	1296
2200*880*300	60	60	1440
2600*880*300	72	72	1728

\*Customized designs are available upon request

### FEATURES

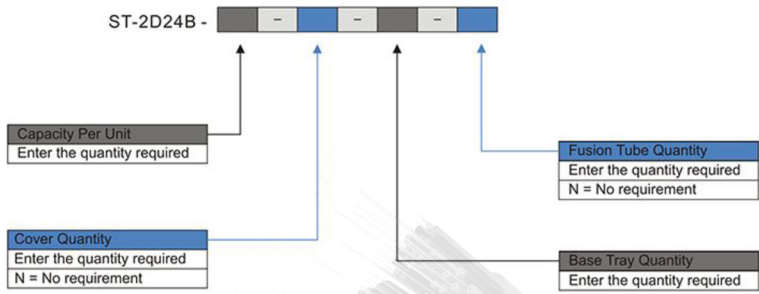
- This frame reached YD/T778, YD/T694 standards and Chinese telecom enterprise product standard “CT FDS09S Optical Fiber Main Distribution Frame (double-sided operation)”
- The frame is not only indoor terminal, but also double-sided optical fiber and pigtail equipment, contains the functions of optical fiber terminal distribution, transfer and storage, with the advantage of big capacity, convenient for both operation and maintenance, as well as plays a major role in optical fiber protection.
- Double-sided operation: Line modules at front side are used to outside cable fixing, stripping, splice and terminal; Row modules at back side are used to terminal equipments pigtails and patch cords, left side fixing equipments’ pigtails, as well as right side fiber-winding shaft.
- Line: SC or FC 12 cores adapter is installed on the drawer-type 12 cores integrated tray, and the tray is installed on the tray rack mount; Row: SC or FC 12 cores adapter is installed on the revolving 12 cores integrated tray, and the tray is installed in the 72 cores unit cabinet.
- Cables and fibers can be inlet from the top of the frame through separate entrances. Cable (fiber) entrances are protected by cable-protected ribbon and contain enough space for fiber passing.
- Multilayer horizontal fiber trays are installed on the row modules of the frame, convenient for frames combining..



### OPTIONAL ELEMENTS

- Hardware to fasteners, and fastening to the number of fiber needed can be offered on request.
- Elements to protect buffers depending on the number of cables needed can be offered on request.
- Accessories such as screws, nut, fasteners for raiser floor or concrete floor can be offered on request.
- Customer’s logo can be printed on the upper left corner or upper right corner of the frame on request.

## CATALOG NUMBER



### Ordering Example :

ST-2D24B-48-1-2-48 48 cores , 1 cover , 2 base tray , 48 fusion tubes

### Note:

\*Cable diameter is 0.9mm.

if the required type of any item is not on the relevant list, please use 'O' or 'OO' as the red cells indicate , and kindly state the required type in the description of PO.